

# Temperature & RH Detector/ Controller



## Applications

- High end HVAC systems
- Ventilation systems
- Detection and display temperature and RH measurements
- Control temperature and humidity devices
- Modbus communication systems
- Wireless receiving and transmission of temperature & RH



Scan the QR code to visit our website

[www.iaqtongdy.com](http://www.iaqtongdy.com)

[info@tongdy.com](mailto:info@tongdy.com)

## Product No: TKG-TH

### Features

- Designed for real-time detection of temperature and relative humidity
- High accuracy sensors combined temperature and relative humidity together with the digital auto compensation
- External sensing probe designed for more accurate measurements, no influence from components heating
- Special white backlit LCD can be selected with displaying both actual humidity and temperature
- Smart structure for easy disassembly
- Three types optional: wall mounting, duct mounting and external sensor type
- Provide up to two dry contact outputs with each 5amp
- Friendly operation buttons for setup and operating
- Modbus RS485 communication optional
- CE-Approval

## Typical Applications

- HVAC systems
- Ventilation systems
- Detection and display temperature and RH measurements
- Control temperature and humidity devices
- Modbus communication systems
- Wireless receiving and transmission of temperature& RH

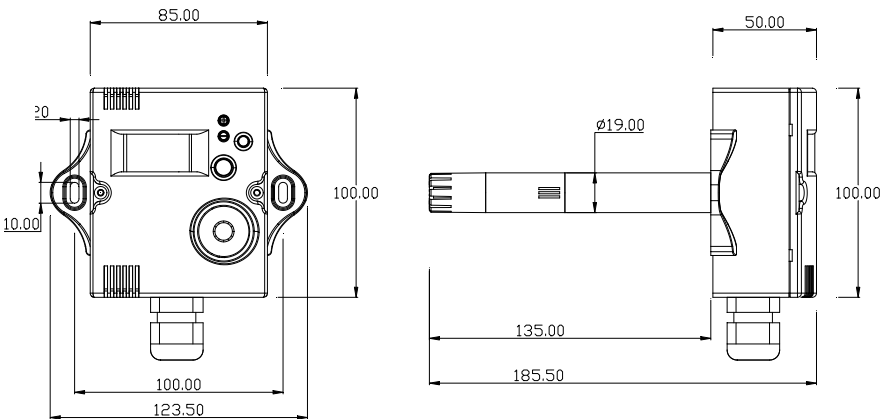
## Specifications

	Temperature	Humidity
Accuracy	±0.5℃ (20~40℃)	±4.5%RH (25℃, 15%-85%RH)
Measuring range	-20℃~60℃(default) 0℃~50℃ 0℃~60℃ selectable in orders	0 -100%RH
Display resolution	0.1℃	0.1%RH
Stability	±0.1℃	±1%RH per year
Storage environment	20℃-60℃, 5%RH~70%RH non condensing	
Connection	Screw terminals/ wire diameter:1.5mm <sup>2</sup>	
Housing	PC/ABS fireproof material	
Protection class	IP40	
Output	2X5Amp dry contacts	
RS485 interface (option)	Modbus RS485 interface optional	
Power supply	24VAC/VDC±10% or 230VAC±10% selectable	
Power cost	230V: ≤2.8W; 24V: ≤2.0W	
Dimension	Wall mounting: 85(W)X100(H)X50(D)mm+65mm(external probe)XØ19.0mm Duct mounting: 85(W)X100(H)X50(D)mm +135mm (external probe)XØ19.0mm	
Net weight	Wall mounting: 280g Duct mounting: 290g	

# Dimensions & Mounting

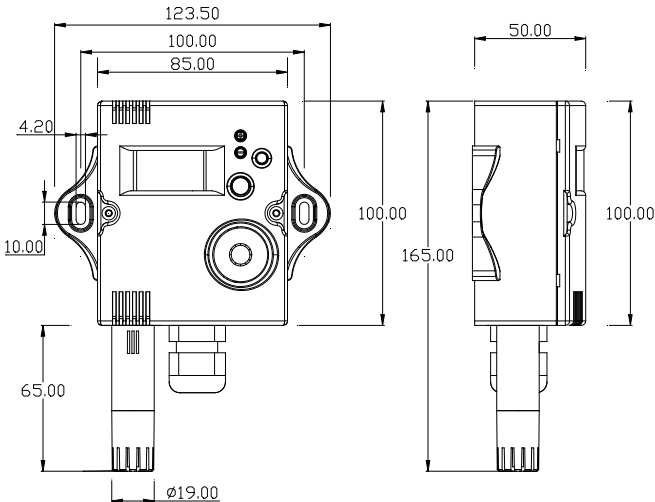
## Duct mounted

Probe Length	135.00mm
Probe Diameter	Ø19.00mm
Installation Holes	100.00mm



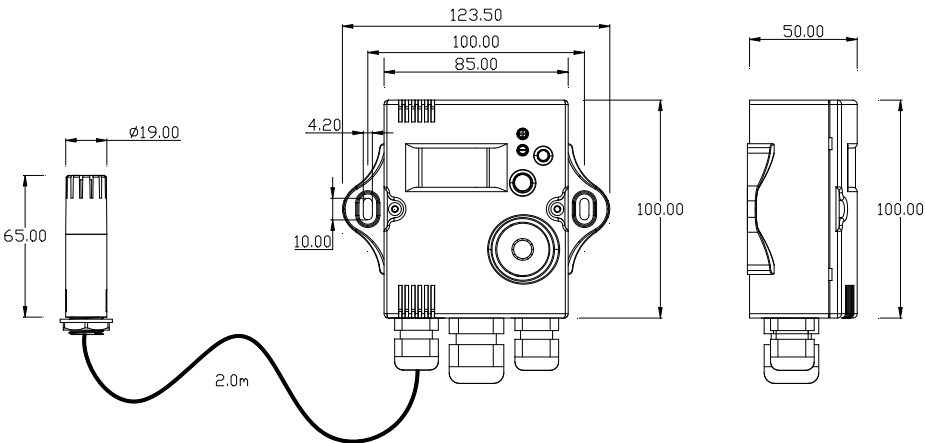
## Wall mounted

probe Length	65.00mm
Probe Diameter	Ø19.00mm
Installation Holes	100.00mm



## External sensor type

probe Length	65.00mm
Probe Diameter	Ø19.00mm
Installation Holes	100.00mm
Connection cable	200.00mm



## Models Guide

### TKG- TH- A 0 C D Y -Tab

A: the sensor installation type

- 1: wall mounted with the external sensor in an adown probe
- 2: probe duct mounted
- 3: split sensor with 2 meters cable connection

C: relay dry contact output

- 0: no dry contact output
- 1: 1xdry contact output (for humidity control)
- 2: 2xdry contact outputs (for humidity and temperature control)

D: Communication option

- 0: no communication
- 1: Modbus RS485 interface

Y: power supply

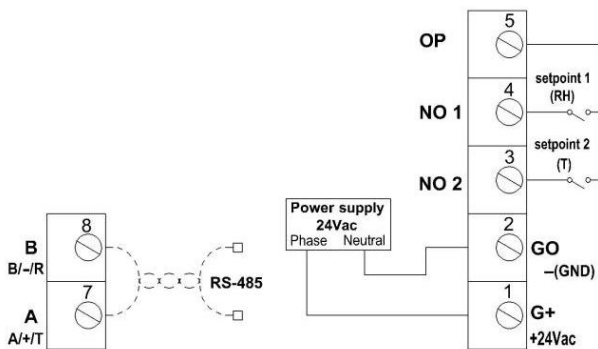
- F: 24VAC/VDC power supply
- A: 230VAC power supply

-Tab: temperature range

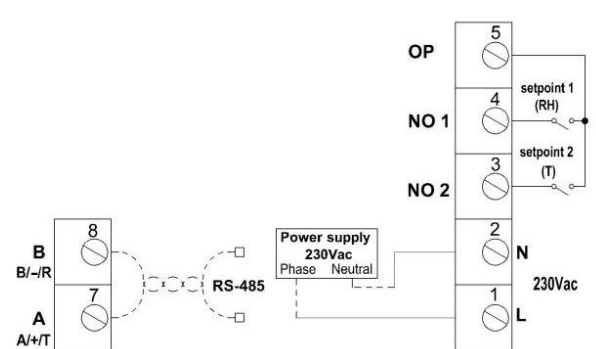
- T26: -20°C~60°C (default)
- T05: 0°C~50°C
- T06: 0°C~60°C

Without the Tab: the temperature range is -20°C~60°C (default)

## Wiring Diagram



Power supply: 24VAC



Power supply: 230VAC

## Shipping Information

### Wall Mounting

Indiv. Ctn. Dim	180mm×130mm×60mm
Master Ctn. Qty	36
Master Ctn. Dim	51cm(L) X39cm (W) X37cm (H)
Master Ctn. Wt.	13KG

### Duct Type

Indiv. Ctn. Dim	255mm×130mm×110mm
Master Ctn. Qty	12
Master Ctn. Dim	44cm(L) X32cm (W) X32cm (H)
Master Ctn. Wt.	6.5KG